

# PRICE LIST



[www.matswanesafaris.com](http://www.matswanesafaris.com)

## MATSWANE

S A F A R I S





ACCOMMODATION	
MARUMBI CAMP - SLEEPS 25	RATE
Per Hunting Day 1:1	\$ 320.00
Per Hunting Day 2:1	\$ 270.00
Observer	\$ 120.00
Arrival / Departure Day	\$ 120.00

ADDITIONAL CHARGES	
DESCRIPTION	RATE
Additional PH or Guide	\$ 120.00
Rifle Rent Per Day	\$ 30.00
Ammunition Charged	At Cost Price

NON-HUNTING ACTIVITIES	
DESCRIPTION	RATE P/P
Visit Crocodile Farm	\$ 40.00
Visit to Mapungubwe Heritage Site Tour - Meals not Included	\$ 45.00
Visit to Kruger National Park - Entrance & Conservation Fee	\$ 50.00
(All above activities will require the service of a nature guide & vehicle)	

TRANSFER	
ROUTE (Charged per Vehicle and not per Person)	RATE
Return: O.R.Tambo Airport to Marumbi Camp	\$ 700.00
Return: Polokwane Airport to Marumbi Camp	\$ 400.00
Kruger National Park - Day Visits	\$ 300.00
All transfer costs are calculated per vehicle and not per person. Maximum passengers per trip is 13 plus the driver. (Meals at stop overs not included in the rate)	

INCLUDED IN RATES	
All Meals in Camp	
Bottled Water, Soft Drinks and Local Beer	
Daily Laundry Service	
Professional Hunter with Vehicle, Tracker and Skinner.	
Trophy Handling	

EXCLUDED IN RATES	
Air Fees	
Taxidermy Fees	
Entrance Fee and Meals to National Parks & Resorts	
Hunting Permit where Applicable is not Included in the Trophy Fee.	

## CONDITIONS

- Daily Rates to be Paid in Full Before Arrival.
- Trophies & Non-Hunting Activities to be Paid in Full Before Departure.
- The Camp Takes a Minimum of 2 People.
- All wounded Animals to be Paid in Full.
- Should the client prefer to make use of any other Taxidermist not situated in Polokwane, then own arrangements have to be made for the collection of the trophies / skins.  
We will not accepted responsibility for this.
- Gratitude's / Tips are paid on own discretion.

## Jaco Hurst

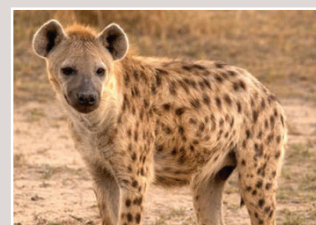
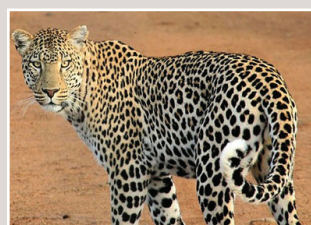
E:mail: [jhurst@limpopo.co.za](mailto:jhurst@limpopo.co.za)

Mobile: +27 82 564 8993 (South Africa)  
+258 84 120 2694 (Mozambique)

[www.matswanesafaris.com](http://www.matswanesafaris.com)

Musina | Limpopo Province | South Africa

# PRICE LIST





PLAIN GAME / TROPHY ANIMALS	
SPECIE	RATE
Jackal	\$ 80.00
Baboon	\$ 110.00
Grey Duiker	\$ 300.00
Impala	\$ 300.00
Warthog	\$ 300.00
Steenbok	\$ 350.00
Limpopo Springbuck	\$ 600.00
Blue Wildebeest	\$ 800.00
Bushpig	\$ 600.00
Oryx	\$ 1000.00
Red Hartebeest	\$ 1000.00
Zebra	\$ 800.00
Klipspringer	\$ 1200.00
Giraffe	\$ 1800.00
Limpopo Bushbuck	\$ 1300.00
Greater Kudu	\$ 1800.00
Waterbuck	\$ 1800.00
Eland	\$ 2000.00
Nyala	\$ 1400.00
Sable	\$ 3500.00
Buffalo	\$ 9 000.00

ANIMALS ON REQUEST	
- AS PER PERMIT AVAILABILITY & QUOTA	
SPECIE	RATE
Civet Cat	\$ 700.00
Genet Cat	\$ 700.00
Honey Badger	\$ 700.00
Brown Hyena	\$ 1900.00
Red Duiker	\$ 1900.00
Sharp's Grysbok	\$ 1900.00

CULL HUNT / FEMALE ANIMALS	
SPECIE	RATE
Impala	\$ 100.00
Blue Wildebeest	\$ 400.00
Kudu	\$ 400.00
Waterbuck	\$ 400.00
Eland	\$ 850.00
Giraffe	\$ 1000.00

BIRD HUNTING - FREE STATE	
SPECIE	RATE
Pigeons	\$ 350 p/p/per day
Waterfowls	\$ 400 p/p/per day

## Jaco Hurst

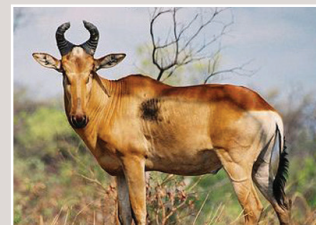
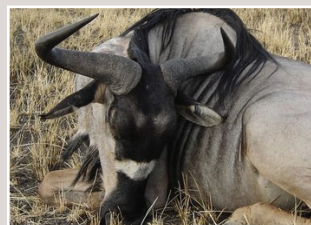
E:mail: [jhurst@limpopo.co.za](mailto:jhurst@limpopo.co.za)

Mobile: +27 82 564 8993 (South Africa)  
+258 84 120 2694 (Mozambique)

[www.matswanesafaris.com](http://www.matswanesafaris.com)

Musina | Limpopo Province | South Africa

# PRICE LIST



## Travel Arrangements

You will travel to Johannesburg. On arrival in Johannesburg there are two alternatives for handling the necessary arrival formalities. Either, use the meet and greet service who will meet you in the arrival hall and process all the paperwork for you, or process the customs paperwork yourself. In either case you will be met outside the arrival hall by a representative of Matswane safaris who will drive you up to the camp.

## Hunting

Hunting is usually of the spotting and stalking variety. Several spotting points are used to identify animals and then to start stalking them. The main method of transport in the area is by four wheel drive terrain vehicles. Note that all hunting from vehicles is strictly forbidden and it is not allowed to have loaded weapons in the vehicle during transport. A normal hunting day starts with breakfast at 05:30 and then hunting until about 12:00 when lunch is eaten. There is an afternoon pause until about 15:00 and hunting is then resumed until around 19:00.

## Weapons and Shooting Distances

The smallest recommended caliber for antelope hunting is 6.5 \* 55 and we suggest that users of 6.5 \* 55, 308 W, and 30-06 use premium grade bullets for hunting. For hunting for any of the big 5 the minimum permitted caliber is 375 HH. You are permitted to take two 2 rifles and 1 shotgun into South Africa. Semi automatic weapons are forbidden. You are also allowed to take in a maximum of 5 Kgs of ammunition which must be stored in a locked box. Shooting distances are normally from 50 to 180 meters. The guides use shooting support sticks so it is advisable to practice with a twofoot before embarking on the trip.

**Licences and Documents** - On arrival in South Africa several entry documents are required.

- An invitation to hunt from Matswane safaris
- The South African SAP 520 weapon document
- European weapon passport or weapon licence and travel passport

## Transport of Weapons

Use approved weapon cases of hard plastic or aluminium. Pack bolts and ammunition in separate luggage since it is not allowed to have the bolt in the same case as the weapon. A locked container for ammunition must be used.

## Mounting of Trophies

Stuffing and mounting of trophies is the choice of the hunter. It is important that any work is carried out by a qualified taxidermist who can display the trophy at its finest.

## Transport of Trophies

When trophies have been disinfected and packed in South Africa they are forwarded to your destination in a wooden case. We use a well known transport company that arranges all paperwork and permits for us. We try to collect many trophies in one shipment thereby keeping costs down for both ourselves and our customers. When trophies arrive at your destination the customer will be invoiced for freight charges + vat.

## Climate

During June, July and August the normal night time temperature is around 10C and a daytime temperature around 25C. From February until May and from September to October the nighttime temperature is relatively warm, and the daytime temperature 20 – 30C. December and January are very warm and there can be a lot of rain in these months. The warmth in South Africa is normally of the 'dry' variety and therefore not too troublesome. From August until October the vegetation is very dry with very few leaves on the trees. From November until March it is normally very green with masses of leaves and flowers.

## Payment For Travel And Accommodation

Payment for plane travel is made directly to the airlines involved who then forward the tickets to you. Payment for accommodation and trophies is made during the last day in the camp.

## Practical Information

The South African currency is the Rand. We recommend that you change your local currency to the Rand whilst in South Africa since exchange rates are more favourable. Normal credit cards such as Visa and Master card can be used in mini banks and Dollars and Euros are both be readily changed on location. For professional hunters tips are given in Dollars. For all others (trackers, skimmers, cooks, cleaners, gardening boy etc.) tips are given in Rand. Mobile telephones have good coverage and it is possible to hire a telephone on location for a fee. Absolutely required vaccinations are for malaria and lockjaw.

## What To Pack

- 1 pair of tough jogging shoes with robust soles or 1 pair of lightweight hunting boots.
- Lightweight hunting trousers in green or camouflage colours
- Lightweight warm jacket
- 2 shirts in dark green or camouflage colours
- 1 camouflage shirt
- 1 pair camouflage shorts
- Hunting cap or hat
- Recreation clothes for in camp events after hunting
- Shoes or sandals for in camp events after hunting

## Optional Items

Video camera, Camera with a large storage capacity, Sunglasses, Small pocket torch, Sun cream, Knife, Binoculars 8 -10 +, Reading matter

## Personal Hygiene

Tooth brush, Tooth paste, Shampoo, Deodorant, Shaving materials, Plaster, Ointment for minor cuts, Imodium (for runny stomachs)  
There is a daily laundry service in the camp so that not many fresh clothes are required. Simply leave any washing on the floor of your room and it will be washed and ironed by the end of the day.

# PRICE LIST

